

The PowerTerm® Lite The PowerTerm® Plus FTP CLIENT INCLUDED

THE HOST ACCESS SOLUTION FOR UNIX CONNECTIVITY



- WebConnect
- Pro Series
- InterConnect
- Plus/Lite
- Thin Clients
- Desktop Virtualization
- Green Computing

Ericom Software's PowerTerm® Lite and PowerTerm® Plus are designed exclusively for organizations requiring secure, reliable and high-speed connectivity to Unix and VT systems. PowerTerm Lite and PowerTerm Plus are optimized for Windows® platforms.

SEAMLESS CONNECTIVITY FROM PC TO HOST

PowerTerm Lite and PowerTerm Plus terminal emulators maximize enterprise-wide productivity by providing reliable access to accounting, inventory management, transaction processing and other mission-critical legacy applications. PowerTerm Lite and PowerTerm Plus support communication modes for network connections including TCP/IP, Pathworks DECnet (CTERM), Pathworks LAT, as well as for serial connections, including RS-232, and PPP/SLIP.

TERMINAL EMULATION EXCLUSIVELY FOR UNIX

PowerTerm Lite and PowerTerm Plus provide emulation for most standard Unix terminal types, including VT52/100/220/320, SCO-ANSI, BBS-ANSI, Wyse 50/60, AT386, Linux Console, Televideo TVI 925/950 and IBM AIXterm.

POWERFUL FEATURES

PowerTerm Lite and PowerTerm Plus provide more features than any other competing product. Features include customizable function keys and menu bar, graphical color selection, Power Script Language, multiple concurrent sessions, history scroll bar, Session Manager, intelligent copy and paste, scalable fonts and advanced printing. These features ensure quick and reliable connections for sharing valuable information throughout the enterprise.

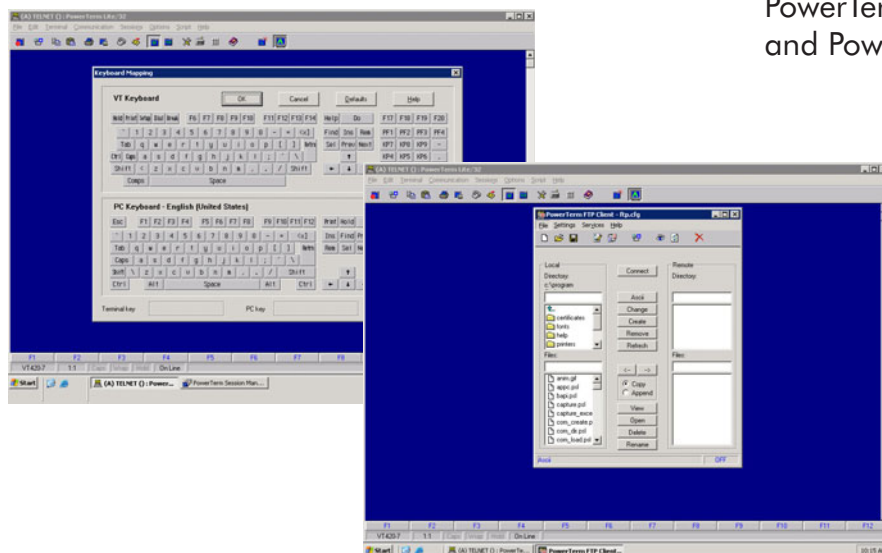
...PLUS SSH ENCRYPTION AND SECURE FTP

For secure host connectivity, PowerTerm Plus provides SSH encryption. Additionally, PowerTerm Plus includes FTP Client, as well as SFTP for performing files transfers between PC and host.

FIVE-MINUTE INSTALLATION

The full 32-bit terminal emulator has an extremely small footprint, allowing quick and simple installation onto any PC in five minutes.

Also available: PowerTerm Host Publisher, PowerTerm WebConnect, PowerTerm Pro, PowerTerm Pro Enterprise, PowerTerm InterConnect, PowerTerm CE, PowerTerm Mobile for Pocket PC and PowerTerm WBT.



POWERTERM LITE/POWERTERM PLUS TECHNICAL SPECIFICATIONS

PLATFORMS SUPPORTED	Microsoft® Windows XP, Windows 2003, Windows Vista, Windows 2008, Windows 7, and Windows 2008 R2
HOSTS SUPPORTED	Unix, Linux, OpenVMS
TERMINALS EMULATED	VT52, VT100, VT220, VT320, VT420, VT525, SCO-ANSI, BBS-ANSI, AT386, AIXterm, Wyse 50/60, Televideo TVI 925/950
SUPPORTED INTERFACES	Ethernet, Token Ring, Serial Ports
COMMUNICATION MODES	TCP/IP Winsock, Pathworks DECnet, Pathworks LAT, serial, modem, direct via COM port, PPP/Slip
FILE TRANSFER	FTP Client*, SFTP Client*, X-Modem, Y-Modem, Z-Modem, transfer to/from clipboard, remote file browsing, ASCII
PRINTING SUPPORT	All printing sizes, landscape and portrait printing, print screen, auto print mode, advanced printing, hold/release, form feed
SCREEN SUPPORT	Graphical drag & drop keyboard mapping, graphical color selection, customizable function keys, scalable fonts, status line, menu bar, toolbar, 80/132 column width, variable lines per page, double width/height characters, blink & underline attributes, reverse screen support, and more
LANGUAGE SUPPORT	English, German, French, Spanish, Italian, Greek, Turkish, Danish, Finnish, Portuguese and more
SECURITY SUPPORT*	SSH, SSH Keys, SFTP
OTHER FEATURES	Modem dialing, multiple sessions, Power Script Language, script recorder, keep-alive-timeout, graphical drag and drop, keyboard property page, Intellimouse support, save-lock-state, language code pages support, automated login, hide menus, file operations, history scroll bar for session review, high-level API, DDE client & server, COM client, LK450 keyboard support, intelligent copy & paste of blocks/lines/words, floating programmable PowerPad keypad, status display for host and printer, and more

*Available only in PowerTerm Plus

ERICOM – ACCESS DONE RIGHT

Ericom® Software is a leading global provider of Application Access and Virtualization Solutions. Since 1993, Ericom has been helping users access business-critical applications running on a broad range of Microsoft® Windows® Terminal Servers, Virtual Desktops, Blade PCs, legacy hosts, and other systems. Ericom provides concrete business value by helping organizations realize the benefits of their IT investments. With offices in the United States, United Kingdom, EMEA, India and China, Ericom also has an extensive network of distributors and partners throughout North America, Europe, and Asia. Our expanding customer base is more than 30 thousand strong, with over 7 million installations.

Ericom and PowerTerm are registered trademarks of Ericom Software. Visual Basic and Windows are either registered trademarks or trademarks of Microsoft Corporation in the United States and/or other countries. All other brands or product names mentioned are trademarks of their respective owners.

North America
Ericom Software Inc.
231 Herbert Avenue,
Building #4
Closter, NJ 07624, USA
Tel +1 (201) 767 2210
Fax +1 (201) 767 2205
Email: info@ericom.com

UK & Western Europe
Ericom Software (UK) Ltd.
11a Victoria Square
Droitwich, Worcestershire
WR9 8DE, United Kingdom
Tel +44 (0) 845 644 3597
Fax +44 (0) 845 644 3598
Email: info@ericom.co.uk

International
Ericom Software Ltd.
8 Hamarpeh Street
Har Hotzvim Technology Park
Jerusalem 91450 Israel
Tel +972 (2) 591 1700
Fax +972 (2) 571 4737
Email: info@ericom.com

