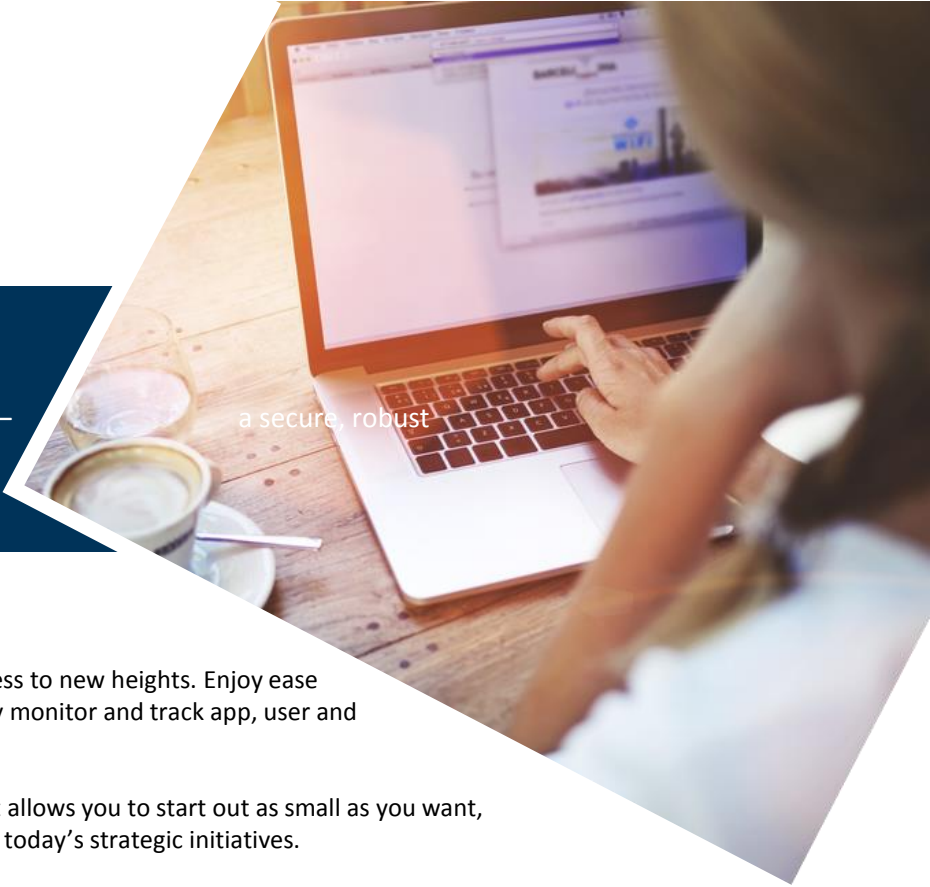


Ericom Connect®

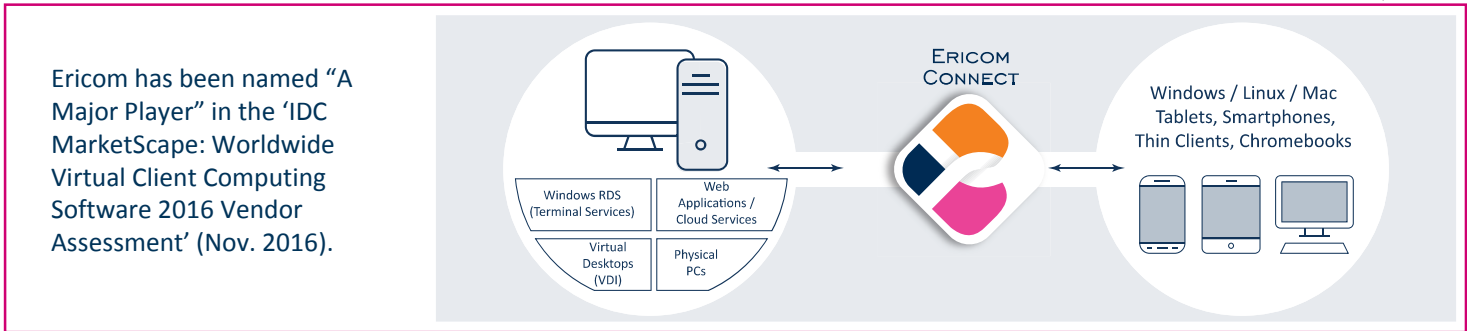
Whether you require workforce mobility, extreme scalability or an easy out-of-the-box connection broker, Ericom Connect offers it all – access management solution that is easy to deploy and use.



It Just Works!

Ericom Connect takes enterprise-grade managed access to new heights. Enjoy ease of use along with powerful reporting tools to centrally monitor and track app, user and system performance throughout the organization.

Supporting unlimited concurrent use, Ericom Connect allows you to start out as small as you want, and scale gradually and predictably to keep pace with today's strategic initiatives.



Ericom has been named "A Major Player" in the 'IDC MarketScape: Worldwide Virtual Client Computing Software 2016 Vendor Assessment' (Nov. 2016).

Why Ericom Connect®?



Elastic Grid Architecture.

Ericom Connect's highly scalable and robust architecture allows enterprises to manage applications and desktops effectively, while supporting thousands of hosting servers and hundreds of thousands of user sessions.



Cloud-Ready.

With multi-tenancy support, service providers can offer managed and unmanaged access solutions, such as Desktops as a Service (DaaS), while enterprises can manage isolated environments based on Line of Business (LOB), geography, and more.



Powerful Reporting & Business Insight.

Dozens of built-in reports provide a holistic view of system resources, users and session activity. This makes it extremely easy to track and optimize application and desktop usage, monitor user productivity, measure system workload and health, and troubleshoot connectivity issues/errors.



Multi Data Center Support.

Enterprises can effectively distribute their access infrastructures across multiple data center locations, while ensuring accessibility, reliability and business continuity.



100% Web-based Administration.

Ericom Connect's easy-to-use, unified admin console enables IT staff to centrally deploy, manage and monitor all resources and users from a single web-based interface.

The Benefits of Ericom Connect

Rapidly deploy virtualized applications & desktops.
In hours, not days!

Great user-experience.
Enjoy easy HTML5 browser-based access to applications, desktops & data

Turn IT from a cost center into an operational data goldmine.
Leverage a wealth of IT operational data via powerful reporting and proactive troubleshooting

Significantly reduce IT & Helpdesk workload. Ericom Connect requires no end-user installations, plug-ins or patches, thus lowering IT complexity and workload

Ensure business & workforce continuity. Robust, always-on, clientless access mitigates business disruptions and improves workforce productivity

Flexibly addresses a wide variety of business needs. One platform – multiple use cases

Choose your Version

Ericom Connect Professional
For small to medium-sized organizations with fewer than 1000 users.

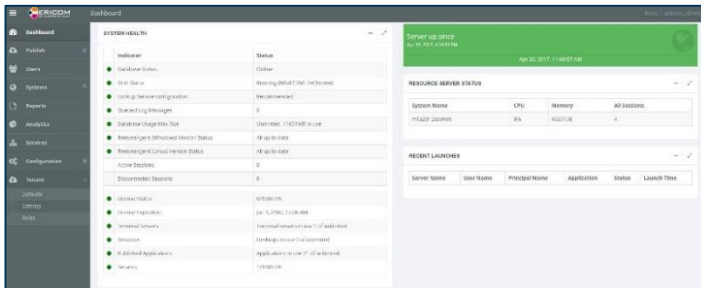
Ericom Connect Enterprise
For organizations with 1000+ users who need a flexible, highly scalable solution.

Ericom Connect Addresses Multiple Business Needs

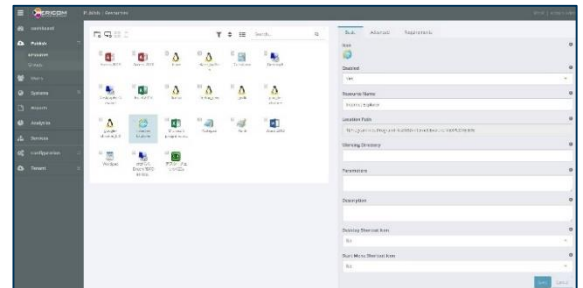


"Ericom Connect... The whole thing just feels really intuitive. You can create groups of applications, groups of servers, and groups of users that you then manage as a group. So you can associate a group of apps with AD items and apply groups to hosts."

Brian Madden, Virtualization Expert



Get an immediate, high level view of the health of your system



Configure, customize and view all published applications and desktops



North & South America
Ericom Software Inc.
231 Herbert Avenue
Closter, NJ 07624 USA
T +1 (201) 767 2210
F +1 (201) 767 2205
E-mail info@ericom.com

UK & Western Europe
Ericom Software (UK) Ltd.
11a Victoria Square
Droitwich, Worcestershire
WR9 8DE United Kingdom
T + 44 (0) 1905 777970 E-
mail ukinfo@ericom.com

Rest of World
Ericom Software Ltd.
8 Hamarpeh Street
Har Hotzvim Technology Park
Jerusalem 9777408 Israel
T + 972 (2) 591 1700
F + 972 (2) 571 4737
E-mail info@ericom.com

Copyright © 2017 Ericom® Software.

