

# PowerTerm®

## QUICK REFERENCE GUIDE

(Mac® OS X Edition)

### CONTENTS

#### 1. PowerTerm Requirements

Minimum system requirements to run PowerTerm.

#### 2. Installation

How to install PowerTerm.

#### 3. Connection Requirements

What you must know before you make a connection.

#### 4. Quick Start

The 'quick' way to make a connection.

#### 5. PowerTerm at a Glance

A look at the PowerTerm window.

#### 6. Soft Key Customization

Programming Soft Keys.

#### 7. Keyboard Customization

Programming keyboard keys.

#### 8. Terminal Setup

How to determine Terminal settings.

#### 9. Print Screen & Auto Print

Brief description and how to use.

#### 10. Slave Printing

Slave Printing description and supported emulations with their corresponding sequences.

#### 11. Saving Terminal Settings

How to save your settings and start a session with your selected settings.

#### 12. Transferring files

How to transfer files between the PC and the host.

#### 13. FAQ

Frequently asked questions.

#### 14. Providing Support

How to receive technical support from Ericom.

### 1. POWERTERM REQUIREMENTS

- Mac OS X Tiger (or higher)
- 500MHz processor or higher
- 17 MB free space on your hard drive
- 128 MB of RAM
- Connection to a host computer.

### 2. INSTALLATION

1. Insert the CD into the CD-ROM drive.
2. Double-click the **.zip** file to extract the installer.
3. Double-click the icon to run once the installer is placed on the desktop.



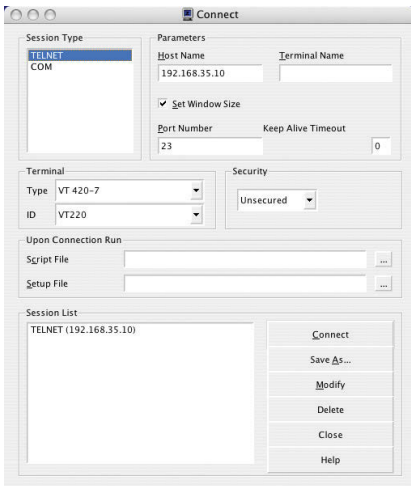
4. Follow the **InstallAnywhere** instructions.



### 3. CONNECTION REQUIREMENTS

In order to make a connection, you must know the following:

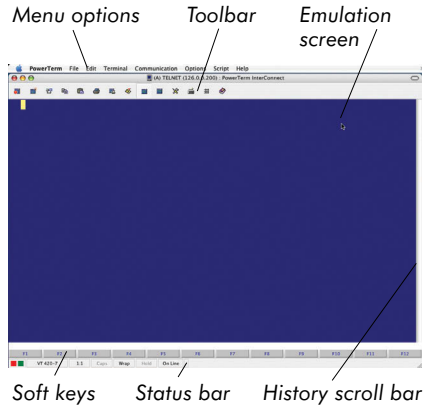
- Type of emulation needed in order to connect to the host.
- Method of communication:
  - **Telnet** (TCP/IP) or **COM**.
  - **Hostname** or IP address of the host machine.



### 4. QUICK START

1. Launch PowerTerm InterConnect.
2. Enter connection settings in the dialog box.
3. Press **Connect** to connect to host.

### 5. POWERTERM INTERCONNECT AT A GLANCE



### 6. SOFT KEY CUSTOMIZATION

To assign a “complex” script command to a soft key.



Press the command key (‘open-apple’) + Soft key to assign a script command.

### 7. KEYBOARD CUSTOMIZATION

**Three ways to map a keyboard key:**

1. Drag the key on the upper keyboard and drop it on the desired key on the lower keyboard.
2. Press <open apple command button> and select a PC key to program a “complex” keymapping.

### Examples:

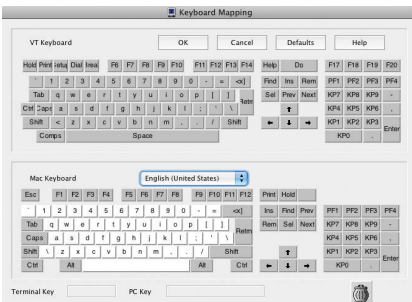
- Send <escape>23~
- Send "abcxyz<cr>"
- Send \x7f (mapping to hex value)

### 3. Scripting language

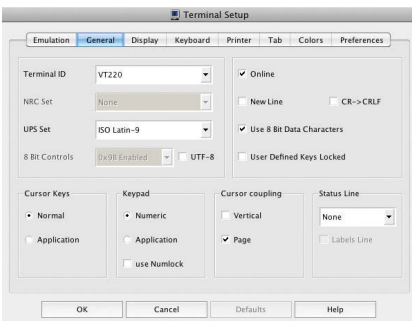
#### Examples:

- Key f1 do {send <escape>23~}
- Key numpad1 do {send "abcxyz<CR>"}
- Key delete do {send \x7f}

To view the keyboard map, select **Options | Keyboard Map**.



## 8. TERMINAL SETUP



**NOTE** The property pages and their content may change according to the selected emulation.

**Emulation** Shows the supported emulation terminal types. Click the emulation you require.

**General** Lets you define characters sets, key behavior, etc.

**Display** Lets you define screen properties and features.

**Keyboard** Lets you define keyboard properties and features.

**Printer** Lets you define printer properties and features.


**Tabs** Lets you determine tabs stop in the work area. Tabbed data received from the host will be laid out in the work area according to ruler settings you define here. (VT Only)

**Colors** Lets you define the color of displayed data. Color definitions are stored in the terminal parameters file (.pts)


**Preferences** Lets you determine PowerTerm behavior and automate processes. Settings remain active until you change them.

## 9. PRINT SCREEN & AUTO-PRINT

### Print Screen

To print screen, select **File | Print Screen** or press .

**Auto Print (non-IBM emulations only)** Accumulates incoming data while it is displayed on the screen.

1. Configure for auto print by selecting the device under **Terminal | Setup**.
2. Select the **Printer** tab.
3. Select the Printer Device:
  - **Print Manager** for printer.
  - **File** for printing to a file and Specify its name in the **File Name** text box.
4. Click **OK**.
5. Click  when finished and the data will be sent to the output device.

## 10. SLAVE PRINTING

Slave printing represents automatic routing of an input data stream, such as a report, to the PC's printer port. To use this feature it is necessary to precede the data stream with an initial escape sequence, and then signal the end of the data stream with another escape sequence.

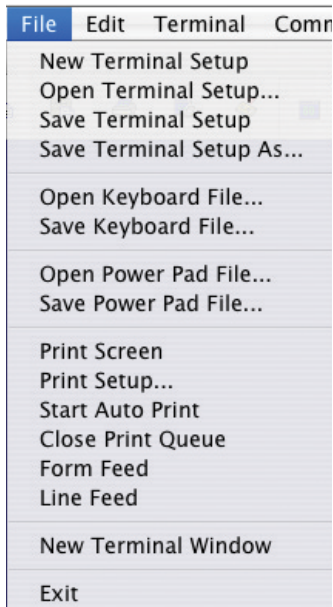
For example:

For VT and SCO:

- To enable send: <escape>[5i
- To disable send: <escape>[4i

## 11. SAVING SESSION SETTINGS

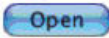
Once you have selected all of your settings (i.e., colors, printer selections, emulation type, etc.) you can save these settings to be used at a later time.



Select the **File** menu, and choose from one of the following:

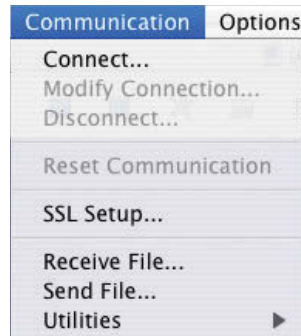
- **Save Terminal Setup** – this stores your settings to the PowerTerm default profile. These settings will be used on the initial start of PowerTerm.
- **Save Terminal Setup As** – this allows you to create multiple setup files in cases where you have multiple hosts to connect to and are in need of different settings.

**To start a session with a stored file:**

1. Open PowerTerm
2. Select **File | Open Terminal Setup**.
3. Browse and select the desired **.pts** files.
4. Click  to load the setup file.

## 12. TRANSFERRING FILES

PowerTerm InterConnect for Mac enables you to transfer files between the PC and the host, implementing the appropriate communication protocol. PowerTerm supports transferring of both ASCII and non-ASCII files.



■ **To send a file from the PC to host**

1. Connect to a host.
2. Initiate the receive file operation on the host.
3. Select **Communications | Send file**.
4. Fill out the necessary parameters.
5. Click **OK**.

■ **To receive a file to the PC from the host**

1. Connect to a host.
2. Initiate the send file operation from the host.
3. Select **Communications | Receive file**.
4. Fill out the necessary parameters.
5. Click **OK**.

### 13. FAQ

■ ***I am performing a Print Screen and many pages are being printed.***

Select **Terminal | Setup** followed by **Printer** tab.

Change the **Print Screen Data** conversion to **None**.

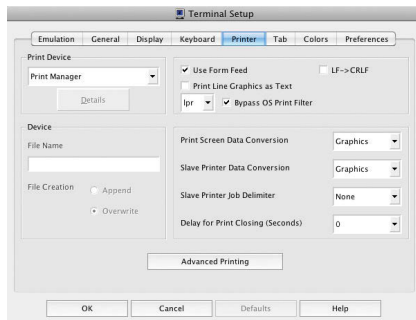
Or: **Check Bypass OS Filter** setting.

Or: Change the **Delay for Print Closing** to 3.

■ ***I am trying to slave print or print screen and nothing appears.***

Select **Terminal | Setup** followed by **Printer** tab.

Change the **Print Screen Data** conversion to **Graphics**.



■ ***I am using SCO ANSI emulation and my graphics (e.g. borders) are not displayed properly.***

Select **Terminal | Setup** followed by **General** tab.

Change the **UPS Set** to **Code page 437**.

Select **Display** tab and enable **Autowrap Characters**.

Change **Lines Per Screen** to **25** lines.

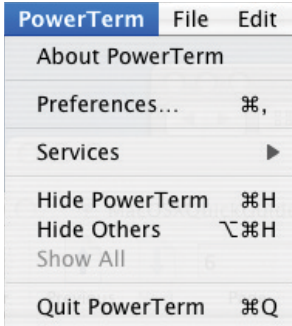
■ ***I need more help not covered in this document.***

Select **Help | Contents**.

Please reference the PowerTerm manual found under **Help, Contents** for **PowerTerm User Guide**.

## 14. PROVIDING SUPPORT

Please email all support requests to  
**SUPPORTUSA@ERICOM.COM**



In order for us to provide you with the highest level of support, please supply us with:

- Mac OS X version (e.g. 10.4.11)
- Emulation type (e.g. VT100)
- Communication type (e.g. Telnet)
- Version of PowerTerm InterConnect for Mac (Found under PowerTerm, About PowerTerm)
- Please describe the problem and how to reproduce it.



### North & South America

Ericom Software Inc.  
231 Herbert Avenue  
Closter, NJ 07624 USA  
T +1 (201) 767 2210  
F +1 (201) 767 2205  
Toll-free 1 (888) 767 7876  
E-mail [info@ericom.com](mailto:info@ericom.com)

### UK & Western Europe

Ericom Software (UK) Ltd.  
11a Victoria Square  
Droitwich, Worcestershire  
WR9 8DE United Kingdom  
T + 44 (0) 845 644 3597  
F + 44 (0) 845 644 3598  
E-mail [info@ericom.co.uk](mailto:info@ericom.co.uk)

### Rest of World

Ericom Software Ltd.  
8 Hamarpeh Street  
Har Hotzvim Technology Park  
Jerusalem 9777408 Israel  
T + 972 (2) 591 1700  
F + 972 (2) 571 4737  
E-mail [info@ericom.com](mailto:info@ericom.com)

Copyright © 1999–2015 Ericom Software. Ericom and PowerTerm are registered trademarks of Ericom Software. Mac is a trademark of Apple Inc., registered in the U.S. and other countries. Other company and brand, products and service names are trademarks or registered trademarks of their respective holders.

QRG-151007-100