

# PowerTerm® Series

## QUICK REFERENCE GUIDE

(Windows® Edition)

### CONTENTS

#### 1. PowerTerm Requirements

Minimum system requirements to run PowerTerm.

#### 2. Installation

How to install.

#### 3. Connection Requirements

What you must know before you make a connection.

#### 4. Quick Start

The 'quick' way to make a connection.

#### 5. PowerTerm at a Glance

A look at the PowerTerm window.

#### 6. Customization

Programming Keyboard, Power Pad, and Soft Keys.

#### 7. Slave Printing

Description and supported emulations with their corresponding sequences.

#### 8. Print Screen & Auto-Print

Brief description and how to use.

#### 9. Advanced Printing

5250 and non-5250 parameter description and setup.

#### 10. Saving Terminal Settings

How to save your settings and start a session with your selected settings.

#### 11. Providing Support

### 1. REQUIREMENTS

- Windows 98 or higher
- Connection to a host computer
- 25 MB free space on your hard disk

### 2. INSTALLATION

1. Insert the CD and locate the CD-ROM drive.
2. Select **Install** and follow the instructions.

*You can also start installation by downloading the files from the Ericom Software evaluation page at [www.ericom.com/ptsoftware.asp](http://www.ericom.com/ptsoftware.asp), and selecting the desired PowerTerm edition.*

### 3. CONNECTION REQUIREMENTS

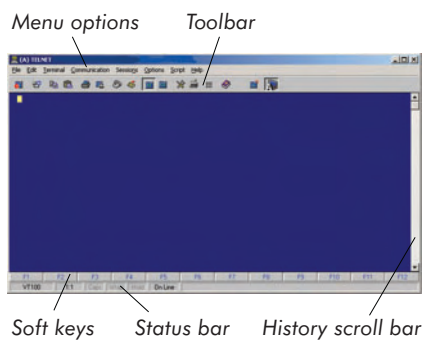
In order to make a connection, you must know the following:

1. Type of emulation needed in order to connect to the host.
2. Method of communication:
  - TCP/IP (make sure it's installed on your PC)
  - Modem/direct serial (must have a modem installed or a direct connection to the host)
  - Gateway (must have appropriate client software installed)
  - Other

## 4. QUICK START

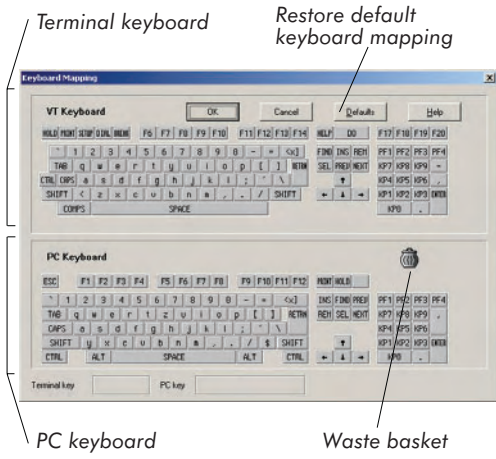
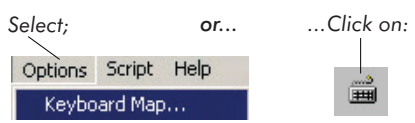
1. Start PowerTerm from the Ericom PowerTerm program group. The **Connect** dialog appears.
2. Set the **Terminal Type** (emulation).
3. Set the **Terminal ID**, if necessary.
4. Select the appropriate **Session Type**.
5. Fill in the appropriate parameter fields.
6. Click **Connect**.

## 5. POWERTERM AT A GLANCE



## 6. CUSTOMIZATION

### Keymapping



### Two ways to map keys:

1. Drag and drop – With your mouse, click the key to be moved, and drag it to the new desired location.
2. Right-click **Enter Script Command** on a PC key to program a 'complex' keymapping.

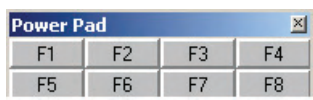
### Examples:

```
send <escape>23~
send 'abc123<cr>'
send \x7f (mapping hex)
key f1 do {send <escape>23~}
key numpad1 do {send 'abc123<cr>'}
key delete do {send \x7f}
```

### Soft Keys / Power Pad Mapping

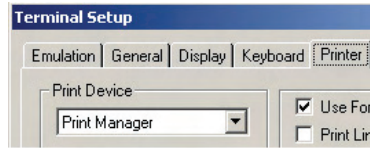


...or Power Pad



1. Right-click on the **Soft Key** or **Power Pad** button that you want to program.
2. Enter its description (the new name that will appear on the button), and click **OK**.
3. Enter the script command to be run by this button, and click **OK**.

If you have problems printing, check under *Terminal/Setup/Printer* tab to be sure that 'Print Device' is correct.



## 7. SLAVE PRINTING

Slave Printing means an automatic routing of an input data stream, such as a report, to the PC's printer port.

To use this facility, it is necessary to precede the data stream with an escape sequence, and to terminate the data stream with an escape sequence.

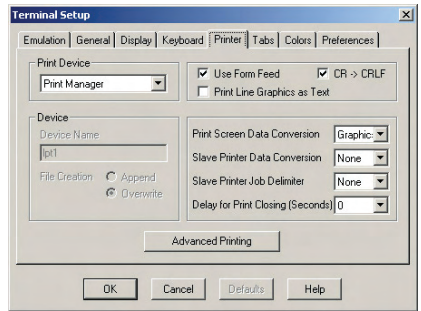
For VT and SCO:

- enable: <escape>[5]
- disable: <escape>[4]

For Wyse 50/60:

- enable: <CTRL>R
- disable: <CTRL>T

## 9. ADVANCED PRINTING



Advanced Printing

## 8. PRINT SCREEN & AUTO-PRINT



**Print Screen**  
Prints the selected text or the entire contents of the work area (Works for all terminal types)

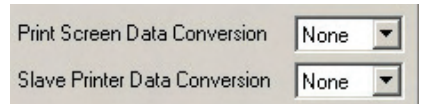


**Start/Stop Auto Print**  
Accumulates incoming data while it is displayed (Works only with non-IBM terminal types)



### To define printing parameters:

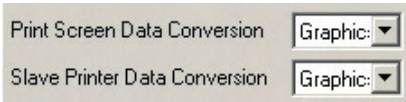
**In Text Mode:** Text mode is designated in the **Printer** tab by setting the two data conversion combo boxes (**Print Screen** and **Slave Printer**) to **None**.



Text Mode settings

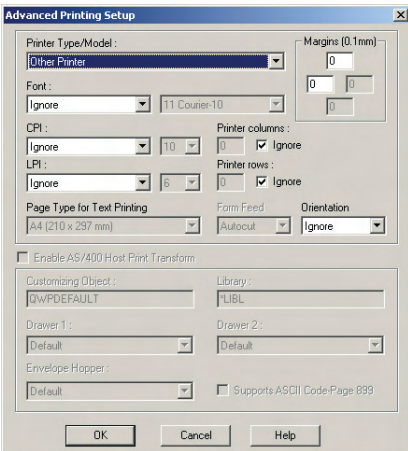
The **LPI**, **CPI**, & **Fonts** fields are functional, while the **Printer Rows** & **Printer Columns** fields are non-functional.

**In Graphics Mode:** Graphics mode is designated in the **Printer** tab by setting the two data conversion combo boxes (**Print Screen** and **Slave Printer**) to **Graphics**.



*Graphics Mode settings*

The **LPI**, **CPI**, & **Fonts** fields are non-functional, while the **Printer Rows** and **Printer Columns** fields are functional.



*Advanced Printing dialog*

## Advanced Printing - How to define AS/400 Host Print Transform settings (5250 Printer)

1. Open the **Advanced Printing** dialog.
2. Select the **Enable Host Print Transform** check box.
3. Select the manufacturer printer type and model from the **Printer Type/Model** dropdown list. If 'Other Printer' is selected for Printer Type/Model, specify the:
  - **Customizing Object**
  - **Customizing Object's Library**
4. Select the paper size from the **Drawer 1** dropdown list.
5. Select the paper size from the **Drawer 2** dropdown list.
6. Select the paper size from the **Envelope Hopper** dropdown list.
7. Select the **Supports ASCII Code-Page 899** check box, if the printer has Code-Page 899 installed.

## Special notes about the selection areas:

### Enable Host Printer Transform (5250 Printer):

Enables pass through (transparent) mode. The host sends (ASCII) command and text directly to the printer. Relevant for non-graphic printing only. If disabled, the host sends (EBCDIC) 5250 SCS format commands and text to the emulation. The emulation, in turn, translates to printer specific commands.

### Printer Type/Model:

Specifies the destination printer. The default is 'HP LaserJet Series II'. If your manufacturer Printer Type/Model is not listed, choose one that is compatible.

Choose **Other Printer** to enable the **Customizing Object** and **Library** fields.

### **Customizing Object:**

Specifies the object name, which you have previously defined on the AS/400. The field is applicable when you first define a customizing object for your printer on the AS/400.

### **Library:**

Specifies the customizing object's library on the AS/400. The field is applicable when you first define a customizing object for your printer on the AS/400.

### **Drawer 1:**

Specifies the size for the paper in Paper Source 1. The default depends on what you chose for the **Printer Type/Model**.

### **Drawer 2:**

Specifies the size for the paper in Paper Source 2. The default depends on what you chose for the **Printer Type/Model**.

### **Envelope Hopper:**

Specifies the size of the envelope. The default depends on what you chose for the **Printer Type/Model**.

### **Supports ASCII Code-Page 899:**

Specifies whether the printer has Code-Page 899 installed. Default is **Disabled**, as most printers do not have Code Page 899 installed.

### **Font:**

Specifies the name of desired font. Default is **Courier-10**.

## 10. SAVING TERMINAL SETTINGS

Once you have selected all your settings, i.e. colors, printer selections, emulation type, etc., you can save these settings to be used later.

To do this, select one of the following **File** menu options:

- **Save Terminal Setup** - This stores your settings to the PowerTerm default profile. These settings will be used on the initial start of PowerTerm.
- **Save Terminal Setup As** - This allows you to create multiple setup files in cases where you have multiple hosts to connect to and are in need of different settings.
- **Save As Icon** - This allows you to create a shortcut icon on the desktop for a particular emulation, and launch that emulation from the desktop.

### **To start a session with stored parameters:**

1. Select **Communication | Connect**.
2. Select your **Terminal Type**.
3. Select **Terminal ID**, if necessary.
4. Select your **Session Type**.
5. Fill in the necessary parameters.
6. Click on the browse button adjacent to the **Setup File** field. PowerTerm displays the **Browse Terminal Setup** dialog with the list of .pts files contained in the PowerTerm directory.
7. Double-click on the file you created. Your file now appears in the **Setup File** field.

8. Click **Save As** to save the connection's settings in the **Session List**. The **Save Session** dialog appears.
9. Enter a **Session Name** and click **OK**.
10. Double-click your session in the **Sessions List** to start the connection.

## 11. PROVIDING SUPPORT

In order for us to provide you with the highest level of support, please supply us with:

- PowerTerm version and build number
- PC operating system
- Host and emulation type
- Communication type
- External software being used that interfaces with PowerTerm (e.g. NW SAA, MS SNA)
- Describe the problem and how to recreate it
- Attach files, if necessary (e.g. bitmaps, scripts)

### How to create a log file:

1. Open PowerTerm.
2. Perform the following:

**Press key combination**  
ctrl+shift+s

**Appears on the status bar**  
"capture.log with send with keys"

*Warning: One's password is liable to be recorded in this manner.*

3. Connect to host and arrive at the trouble spot.
4. Perform the following:

**Press key combination**  
ctrl+shift+s

**Appears on the status bar**  
"capture file end"

5. Ctrl+shift+m will attach PowerTerm log files to an email.

**Contact us:** [support@ericom.com](mailto:support@ericom.com)



#### North America

Ericom Software Inc.  
231 Herbert Avenue, Bldg. #4  
Closter, NJ 07624 USA  
T +1 (201) 767 2210  
F +1 (201) 767 2205  
Toll-free 1 (888) 767 7876  
E-mail [info@ericom.com](mailto:info@ericom.com)

#### UK & Western Europe

Ericom Software (UK) Ltd.  
11a Victoria Square  
Droitwich, Worcestershire  
WR9 8DE United Kingdom  
T + 44 (0) 845 644 3597  
F + 44 (0) 845 644 3598  
E-mail [info@ericom.co.uk](mailto:info@ericom.co.uk)

#### International

Ericom Software Ltd.  
8 Hamarpeh Street  
Har Hotzvim Technology Park  
Jerusalem 91450 Israel  
T + 972 (2) 591 1700  
F + 972 (2) 571 4737  
E-mail [info@ericom.com](mailto:info@ericom.com)

QRG-080914-100